


**LEGEND**

1 – MTBE Well EW-2

Line of Perimeter wells



3 – Warehouse

4 – Area 3

5 – Area 1 Foreshore

6 – Flare

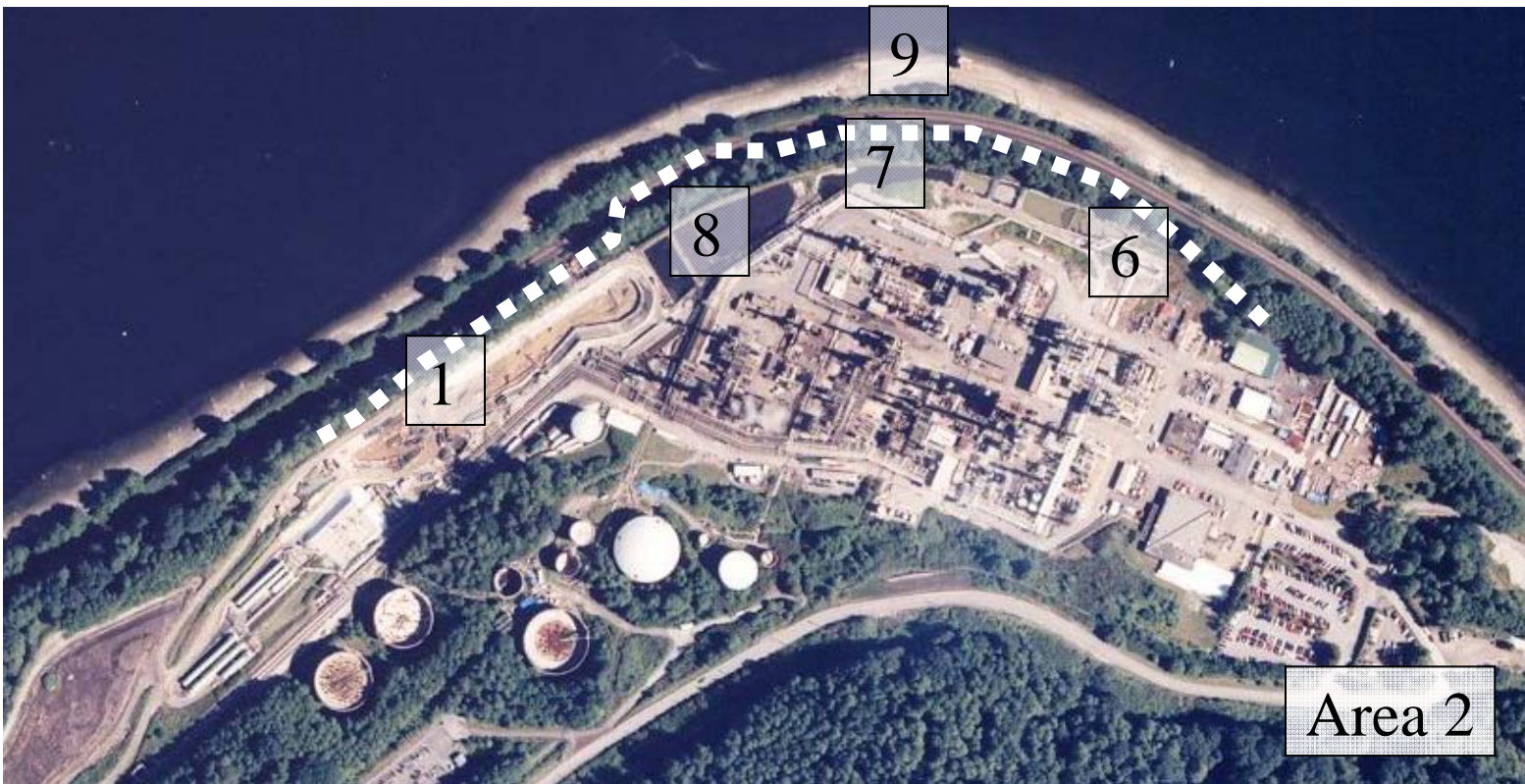
7 – EIB Seep

8 – Ponds

9 - Foreshore

Locations are approximate.

Air photos taken July 2002.



**Area 2**

Burnaby Refinery CAP Meeting

Table 1: **Summary of Project Status, February 19, 2013**

Map No	PROJECT	AREA	CONSULTANT	STATUS
1	Treatment of MTBE in groundwater	2	SLR (Seacor)	No change. (Due to low MTBE concentrations (4 mg/L), treatment to switch from carbon filtration to aeration.)
■ ■ ■ ■	Perimeter Monitoring	1 & 2	URS	No change. Chevron well monitoring program involves semi-annual monitoring. Report of 2011 events provided to BC Environment. 2012 spring and late summer monitoring complete, report in progress.
3	Warehouse	1	URS	No change. (Monitoring, no apparent offsite contamination.)
4	Investigation by railroad crossing and Area 3 (G1-4, and Area 3)	1	URS	Area 3 air injection system started in fall 2010. Some interruption has occurred as a result of construction.
5	Area 1 Foreshore Sediment Remediation	1	URS	No change. Sheen monitoring program in place.
6	Flare	2	URS	No change. Extraction wells continue to be pumped, minor adjustments and maintenance ongoing. Ministry oversight.
7	EIB Seep	2	URS	No change. Extraction wells continue to be pumped, adjustments and maintenance ongoing. Ministry oversight.
8	Ponds	2	URS	No change. Extraction wells continue to be pumped, minor adjustments and maintenance ongoing. Air injection system turned off because water table has been drawn down to below the bottom of the injection wells. Ministry oversight.
9	Foreshore	2	URS	No change. Foreshore monitored weekly, little to no sheen observed. Ministry oversight.

Link to CAP website information on Area 2 Seep Remediation - <http://www.chevroncap.com/files/current-issues.php>